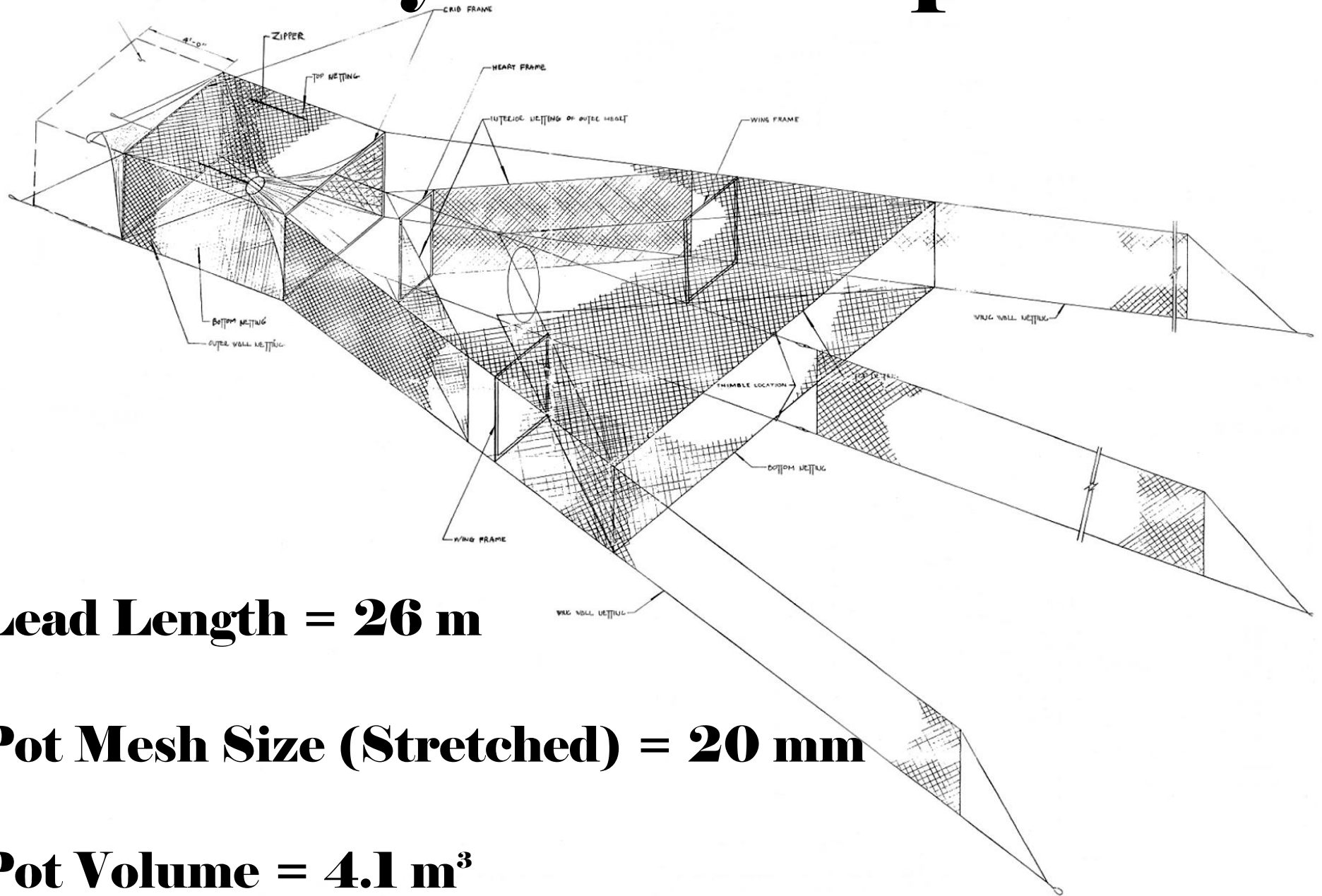


# Pennsylvania Trap Net:



**Lead Length = 26 m**

**Pot Mesh Size (Stretched) = 20 mm**

**Pot Volume = 4.1 m<sup>3</sup>**

# PA TRAP NET SPECIFICATIONS

## Fisheries Management Style

PA Style Trap Nets: To be manufactured of 100% filament nylon knotless nylon netting throughout. To be constructed as per attached drawings No. 1 and No. 2.

### Netting:

One (1) inch stretched mesh (fishing measure) No. 189 (Sterling Co.) 54lb. wet strength half inch square (1/2") nylon, knotless, knitted, 100% bonded Dupont nylon, to be strung on the diamond. Twenty (20) meshes to the foot, to be sewn with #9 twisted nylon twine with not less than a double knot per every other mesh on all frames and lines.

### Connecting Lines:

3/16" (.1875) bonded Dupont nylon  
1/4" as specified on Leader and Crib Frame

### Weights:

To be 2.5 oz. lead, placed on bottom lines directly under float lines as specified in drawings (barrel type leads requested).

### Floats:

Spongex type, 2-1/2" x 1-1/2" x 1/2" on all heart, bonnet, wing, and leader lines. Floats are to be 3'0" apart as specified by drawings.

### Leader:

To be 100' x 4' with 2.5 Oz. barrel type leads 18" apart on the bottom line and floats on top line at 3' intervals. Netting to be of the same type as used over the entire net. Dyeing also required ("Nylon Net Set").

### Tunnel Frame:

To be 12" diameter, 3" steel rod welded (grind flush)

### Aluminum Net Frames:

Crib, heart, and wing frames to be 6061-T6 Alcoa aluminum drawn tubing. Size 1" O.D. x .065 wall thickness. All frames are to be a single piece of tubing with rounded corners and one welded joint which will be smooth (grind flush) the welded joint should be at the top. Three-sixteenth inch (3/16") diameter holes are to be drilled completely through frames at two (2) foot intervals (dimensions specified on drawings).

## PA Trap Net Specifications

Page 2

### Thimbels:

3/8" galvanized steel, on all bridles and lines where shown on drawings.

Net to be completely dyed with "Nylon Net Set" to avoid nylon deterioration. Care should be taken when dyeing the net to avoid stiffness.

Care should be taken to avoid bunching of the net at seems and corners.

Manufacturers (vendors) should follow these specifications accurately and completely when making these PA Trap Nets. Since these nets are used for standardized fisheries sampling, stringent quality control measures will be taken upon delivery of these trap nets to verify if all specifications have been met.

Failure to comply with these specifications will be grounds for trap net rejections and any and all costs involved with the making of these nets will be the sole responsibility of the vendor. Past nets of poor quality or incorrect dimensions require us to take measures to ensure high quality products for our use.